

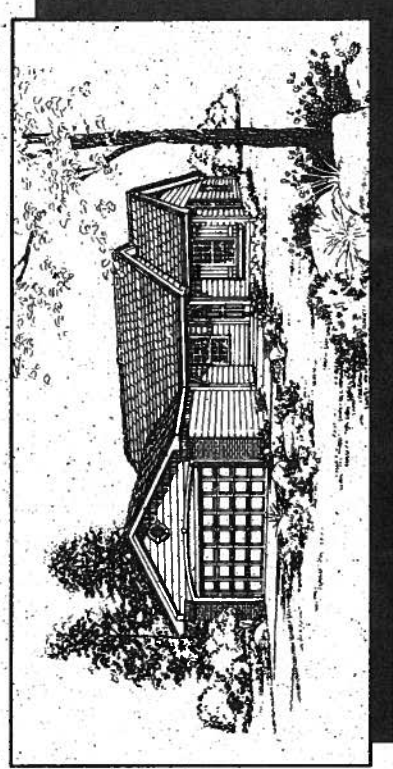
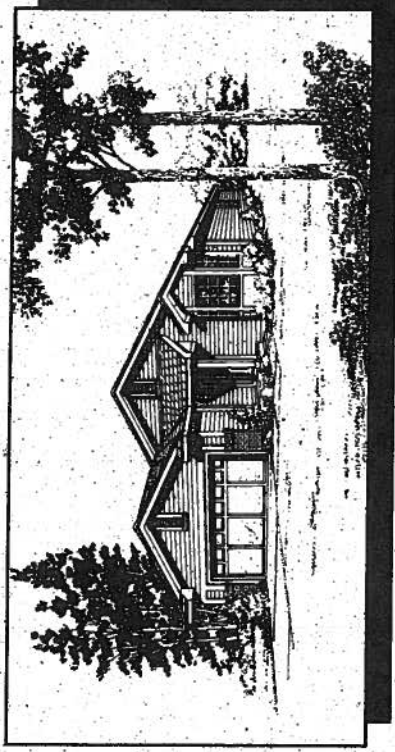
**The Evergreen Collection  
at the Fairways in Lone Tree**  
Model Complex - 9510 Troon Village Drive  
Littleton, CO 80124  
(303) 799-0977



**The SPRUCE - Ranch Plan**

**3 Bedrooms, 2 Baths, \$138,000**

Living, dining, kitchen and nook areas all have vaulted ceilings. A laundry room is located on the main level for convenience. (MODEL #1)



**The CYPRESS - Ranch Plan**

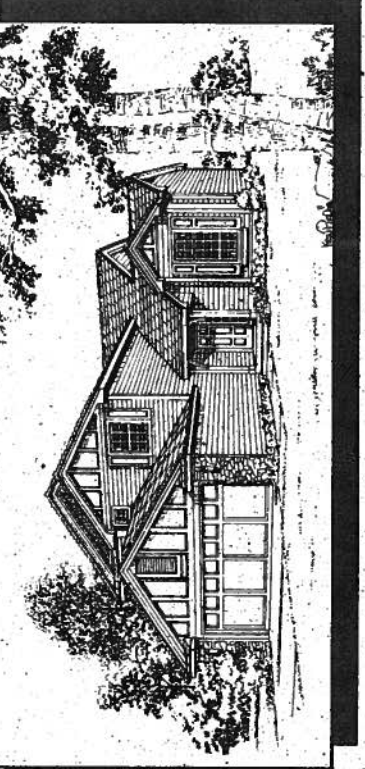
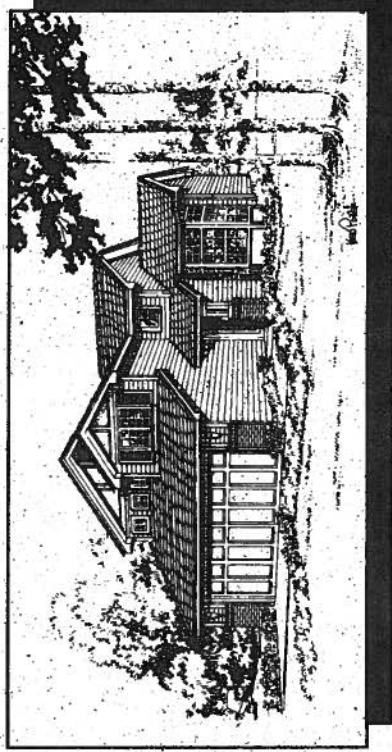
**3 Bedrooms, 2 Baths, \$144,000**

Vaulted ceilings are found in almost every room in this home. The kitchen, nook, and family room layout is designed for maximum interaction.

**The LAUREL - 2 Story Plan**

**3 Bedrooms, 2 1/2 Baths, \$154,000**

Vaulted living and dining areas. The kitchen has an island, and the nook is adjacent to the family room, allowing for easy entertaining. (MODEL #2)



**The SEQUOIA - 2 Story Plan**

**4 Bedrooms, 3 Baths, \$162,000**

The fourth bedroom in this home is located on the main level, making it an ideal guest bedroom, or it can be optioned as a den. The two story entry makes for a dramatic first impression. (MODEL #3)

DESIGNS WITHOUT PRIOR NOTICE. PRICES REFLECT ELEVATION "A" WITHOUT ADDITIONAL OPTIONS. PLEASE SEE SALES REPRESENTATIVE FOR LOT AVAILABILITY. SOME LOCATIONS MAY HAVE A PREMIUM. PRICES EFFECTIVE MARCH 1ST, 1995.

WATT HOMES RESERVES THE RIGHT TO CHANGE PRICES, MATERIALS OR



## The Evergreen Collection at The Fairways at Lone Tree

### Standard Features

#### Energy Efficiency Features

- R-38 ceiling insulation
- R-19 cantilever insulation
- R-15 wall insulation
- R-11 basement insulation
- White thermo-break, dual pane vinyl windows
- Insulated steel entry door with brass kickplate
- 80% high efficiency gas forced air furnace
- 40 g. insulated water heater
- Foam sealed exterior window and door penetrations
- Vapor barriers in exterior walls
- Ceiling fan prewire in master bedroom

#### Quality Construction Features

- Engineered truss joist floor system
- Copper water lines
- Engineered truss systems
- Individually engineered steel reinforced foundation
- GFI safety outlets in bathrooms, kitchen and garage
- Brass entry hardware with deadbolt
- Rough in bath plumbing in basement
- 10 year warranty

#### Exterior Features

- Front yard sprinkler system
- Front yard landscaping
- Cedar wing fencing
- Brick and Stone accents (per elevation)
- 2 car garage
- Masonite lap siding
- 2 coach lights on all garages
- 2 frost proof hose bibs
- Outside electrical outlet
- 4 X 6 concrete patio
- Choose from 15 different exterior color packages

#### Interior Features

- Rounded drywall corners
- Knockdown textured walls and ceilings
- Hardwood entry
- White or Antique white color choices
- Overhead lights in secondary bedrooms
- Stained wood stair handrails
- White painted wood trim and doors
- Moen faucets throughout all baths
- Partial unfinished basement with full basement option
- Accent tile stripe in all full baths
- Medicine cabinets
- 2 cable television prewires
- 2 telephone outlets
- Vaulted ceilings in master bedrooms
- Oval tub in master bath with tile surround
- Garage door prewire

#### Kitchen Features

- GE dishwasher
- GE self cleaning range
- GE disposal
- Moen single lever faucet with sprayer
- White porcelain double sink
- Picture frame cabinets
- Island cabinetry (per plan)
- Lazy susan cabinets (per plan)

#### Optional Features

Please see your sales representative for a complete list of optional features you may choose to customize your new home.

WATT HOMES RESERVES THE RIGHT TO MAKE ANY SUBSTITUTIONS OF EQUAL VALUE IN OUR SPECIFICATIONS

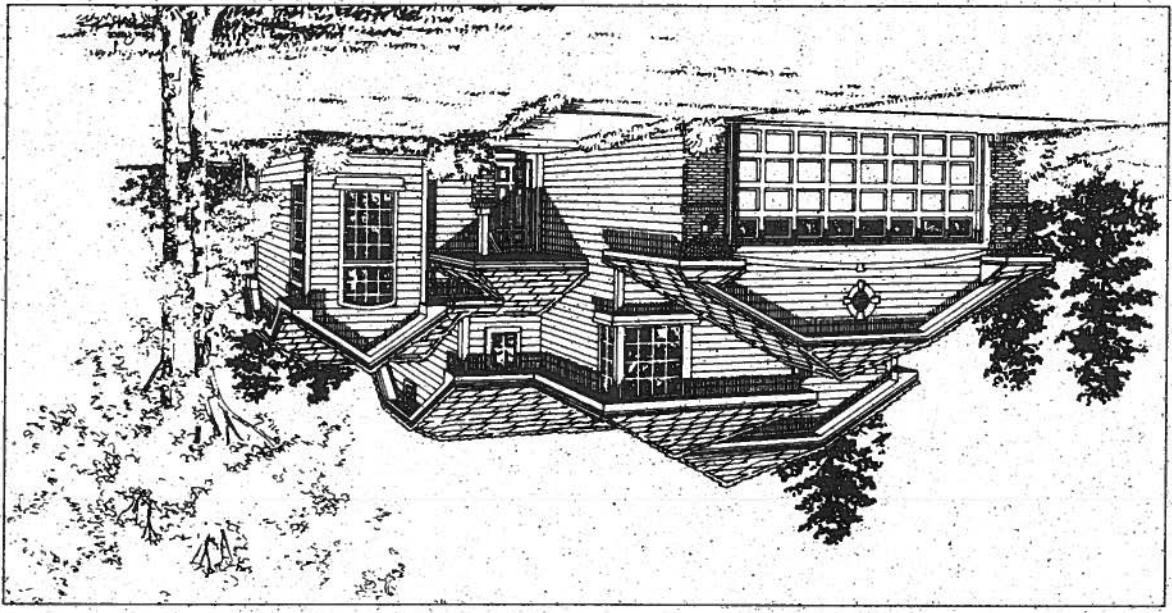
# The Laurel

- R-38 ceiling insulation
- R-19 cantilever insulation
- R-13 wall insulation
- R-11 basement insulation
- 80% efficient gas forced air furnace
- 10 year warranty
- Engineered truss joist floor system
- GE appliances
- Partial unfinished basement with full basement option
- "Knockdown" ceilings and walls
- Rounded drywall corners
- Hardwood entry
- Front yard sprinkler system
- Front yard landscaping
- Ceiling fan prewire in master bedroom
- Overhead lights in secondary bedrooms
- White painted wood doors and trim
- Stained wood stair handrails
- Vaulted or volume ceiling in master bedroom
- Oval tub in master bath with tile surround
- Island cabinetry (per plan)
- Lazy susan cabinets (per plan)
- 2 coach lights on garage
- 4 x 6 concrete patio
- 15 exterior color packages to choose from
- Plus much more - see your sales representative for additional standard features

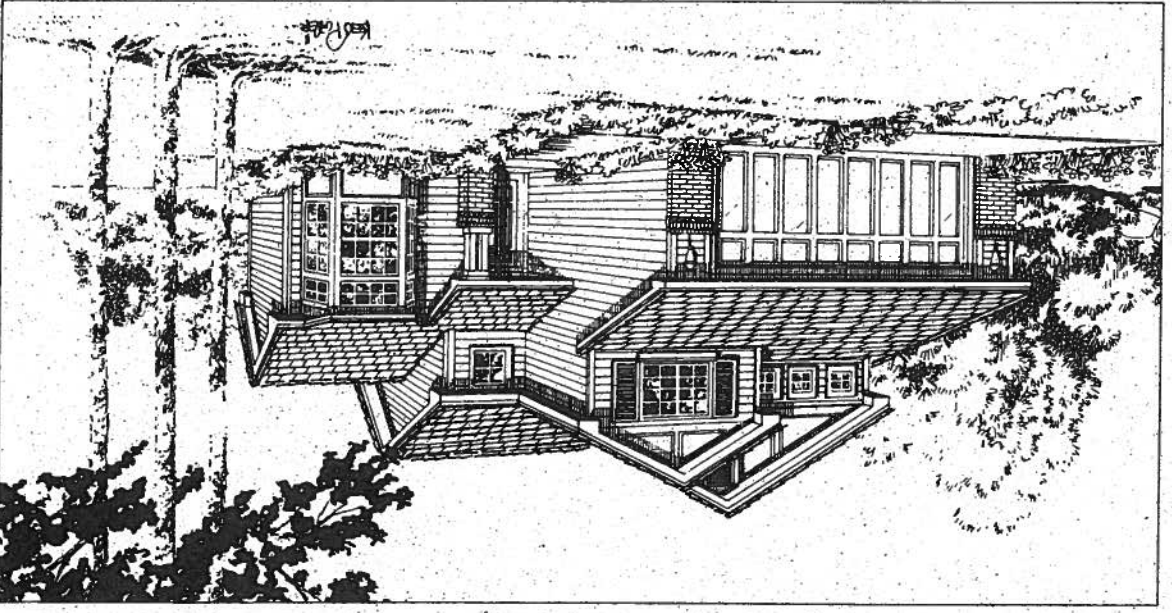


Renderings are an artist's conception only. Watt Homes reserves the right to substitute or change features without notice.

**ELEVATION B**



**ELEVATION A**



# The Laurel

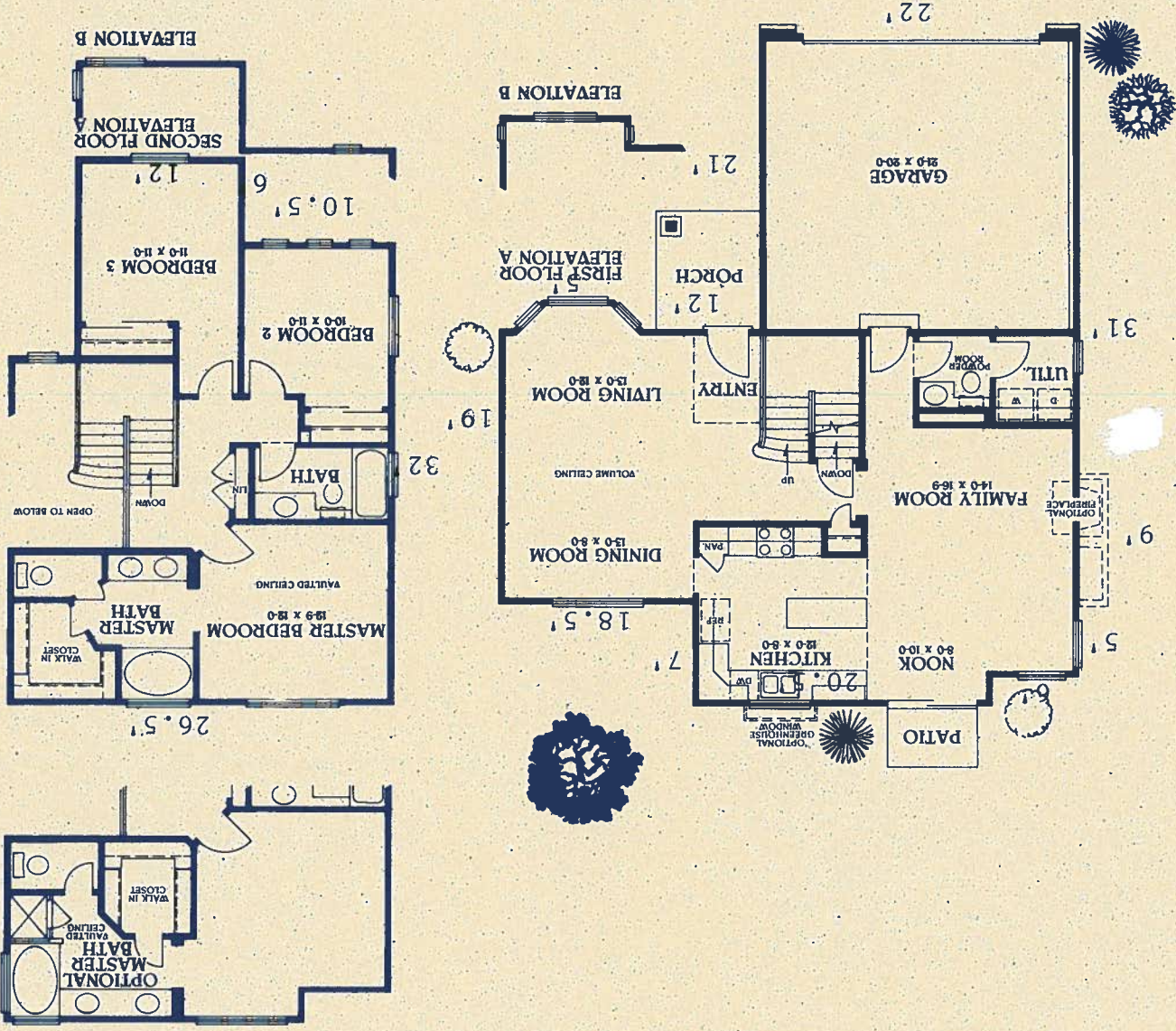
\$  
Price does not reflect premium locations

2 story plan

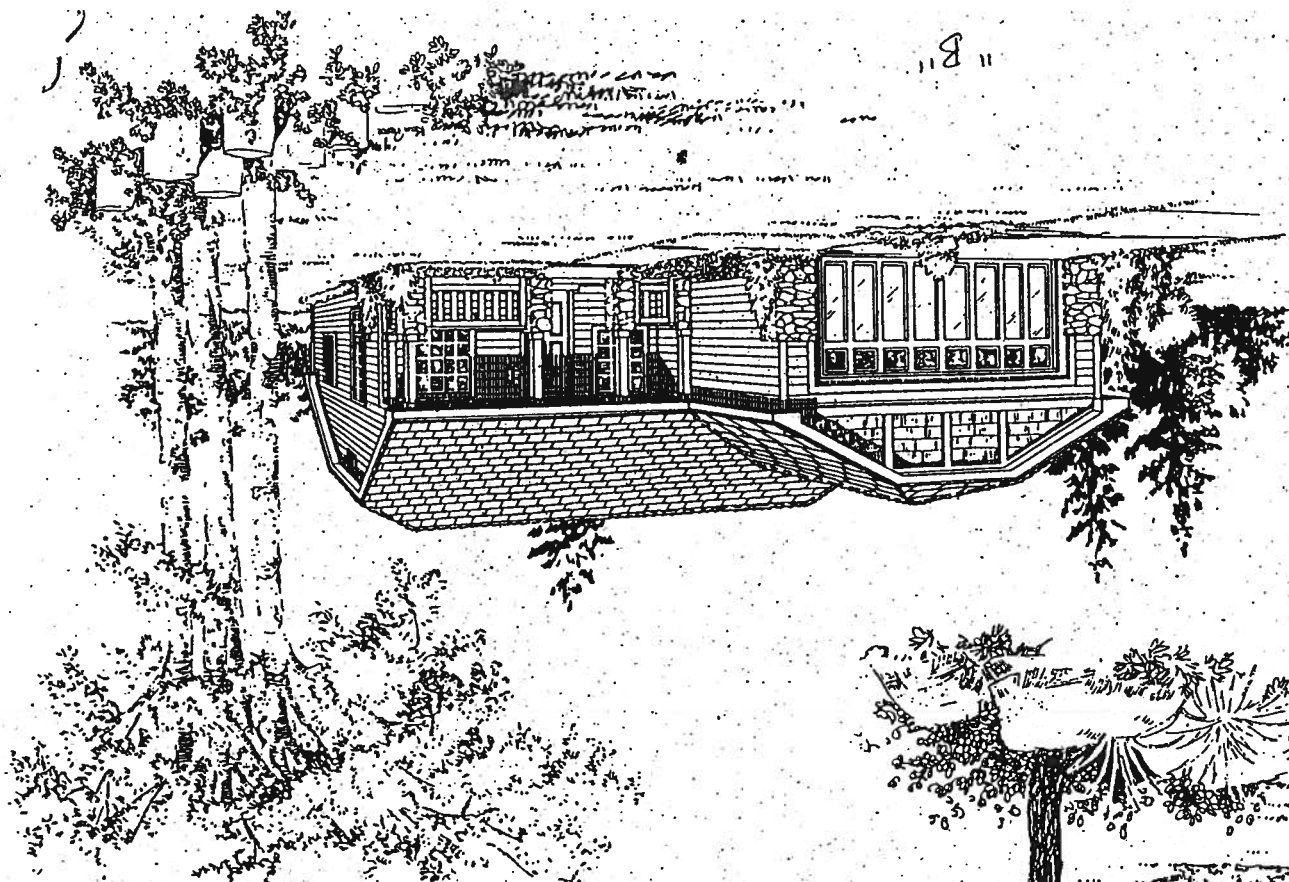
3 bedrooms, 2 1/2 baths

Approximately 1686 square feet with  
 a 558 square foot basement.

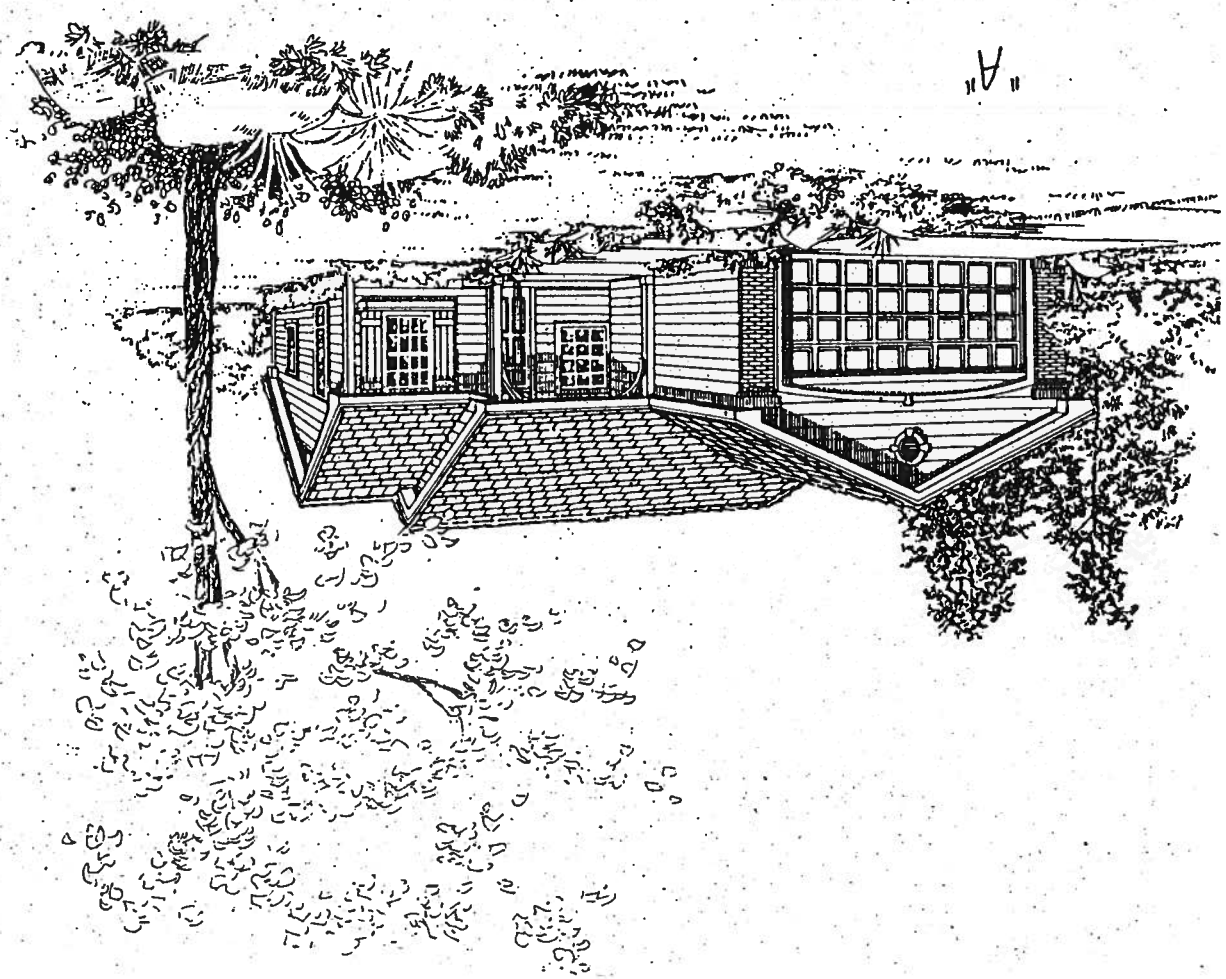
A traditional two story home with interesting architectural features, the Laurel provides style and function. Choose between a bay or a box window in the living room with a volume ceiling extending over both the living and dining areas. The kitchen has an island, and both the nook and family room are surrounded by windows.



Square footage and room dimensions are approximate, subject to change without notice.



CYPRESS



CYPRESS

FIRST FLOOR  
ELEVATION A

GARAGE  
20-8 x 20-3

