

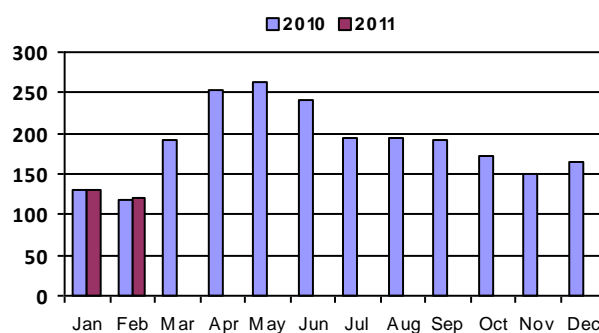
# February 2010 - Real Estate Market Statistics



Denver Southeast - DSE

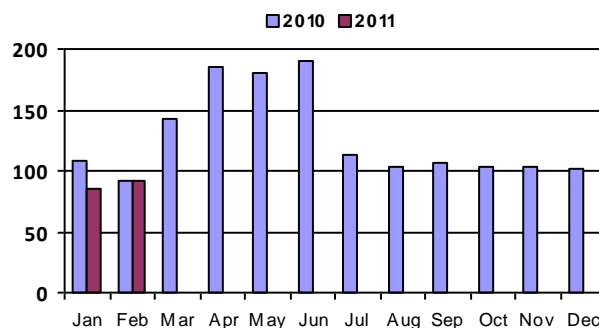
## Closed Residential

Category	Feb-10	Feb-11	% Change
#Of Closed Sales - Month	118	120	1.7%
#Of Closed Sales - YTD	248	250	0.8%
Avg. Days On Market	109	138	26.6%
# Of Active Listings	1,247	1,018	-18.4%
# Of NEW Listings	606	316	-47.9%
Absorption Rate (in months)	9.7	8.5	-11.6%
Average Price (Sold)	437,604	416,878	-4.7%



## Closed Condo

Category	Feb-10	Feb-11	% Change
#Of Closed Sales - Month	92	92	0.0%
#Of Closed Sales - YTD	200	177	-11.5%
Avg. Days On Market	122	136	11.5%
# Of Active Listings	1,200	959	-20.1%
# Of NEW Listings	492	196	-60.2%
Absorption Rate (in months)	11.8	10.8	-8.6%
Average Price (Sold)	197,952	150,801	-23.8%



# Land Title Guarantee Company

<http://www.ltgc.com>

Based on information from Metrolist, Inc. for the period Jan 2009 through present. Note: This representation is based in whole or in part on data supplied by Metrolist, Inc. Metrolist, Inc. does not guarantee nor is in any way responsible for its accuracy. Data maintained by metrolist, Inc. may not reflect all real estate activity in the market.

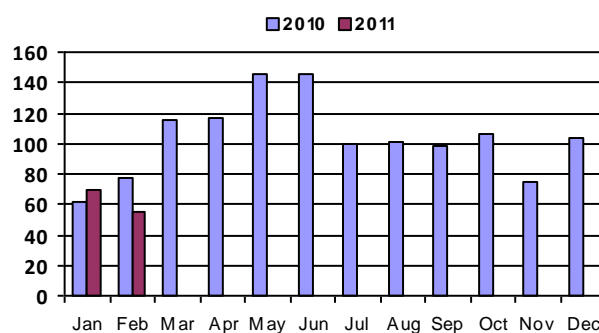
# February 2010 - Real Estate Market Statistics



## South Suburban Central - SSC

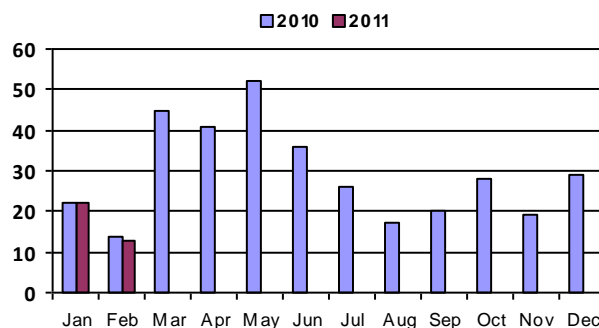
### Closed Residential

Category	Feb-10	Feb-11	% Change
#Of Closed Sales - Month	77	55	-28.6%
#Of Closed Sales - YTD	139	124	-10.8%
Avg. Days On Market	137	148	8.0%
# Of Active Listings	511	489	-4.3%
# Of NEW Listings	280	127	-54.6%
Absorption Rate (in months)	5.8	9.5	62.8%
Average Price (Sold)	357,498	356,740	-0.2%



### Closed Condo

Category	Feb-10	Feb-11	% Change
#Of Closed Sales - Month	14	13	-7.1%
#Of Closed Sales - YTD	36	35	-2.8%
Avg. Days On Market	91	99	8.8%
# Of Active Listings	168	140	-16.7%
# Of NEW Listings	94	48	-48.9%
Absorption Rate (in months)	10.9	10.4	-4.4%
Average Price (Sold)	160,161	165,437	3.3%



# Land Title Guarantee Company

<http://www.ltgc.com>

Based on information from Metrolist, Inc. for the period Jan 2009 through present. Note: This representation is based in whole or in part on data supplied by Metrolist, Inc. Metrolist, Inc. does not guarantee nor is in any way responsible for its accuracy. Data maintained by metrolist, Inc. may not reflect all real estate activity in the market.

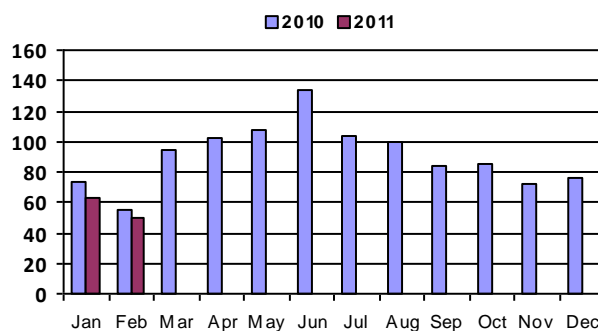
# February 2010 - Real Estate Market Statistics



## South Suburban East - SSE

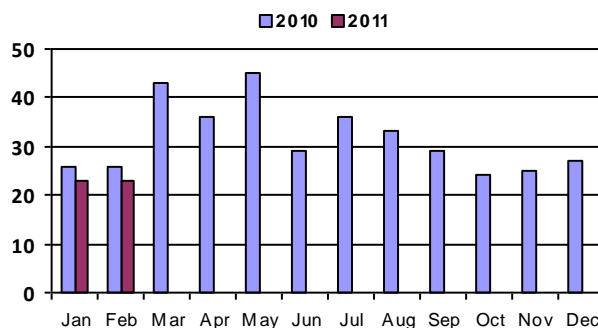
### Closed Residential

Category	Feb-10	Feb-11	% Change
#Of Closed Sales - Month	55	50	-9.1%
#Of Closed Sales - YTD	128	113	-11.7%
Avg. Days On Market	106	179	68.9%
# Of Active Listings	608	517	-15.0%
# Of NEW Listings	271	142	-47.6%
Absorption Rate (in months)	10.3	9.9	-3.4%
Average Price (Sold)	461,265	474,750	2.9%



### Closed Condo

Category	Feb-10	Feb-11	% Change
#Of Closed Sales - Month	26	23	-11.5%
#Of Closed Sales - YTD	52	46	-11.5%
Avg. Days On Market	82	174	112.2%
# Of Active Listings	271	214	-21.0%
# Of NEW Listings	107	59	-44.9%
Absorption Rate (in months)	9.9	9.7	-2.7%
Average Price (Sold)	218,478	250,144	14.5%



# Land Title Guarantee Company

<http://www.ltgc.com>

Based on information from MetroList, Inc. for the period Jan 2009 through present. Note: This representation is based in whole or in part on data supplied by MetroList, Inc. MetroList, Inc. does not guarantee nor is in any way responsible for its accuracy. Data maintained by MetroList, Inc. may not reflect all real estate activity in the market.

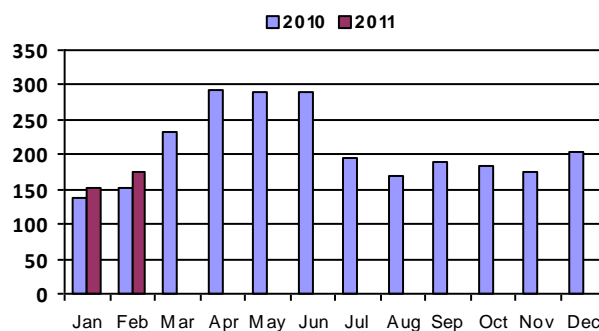
# February 2010 - Real Estate Market Statistics



## Aurora South - AUS

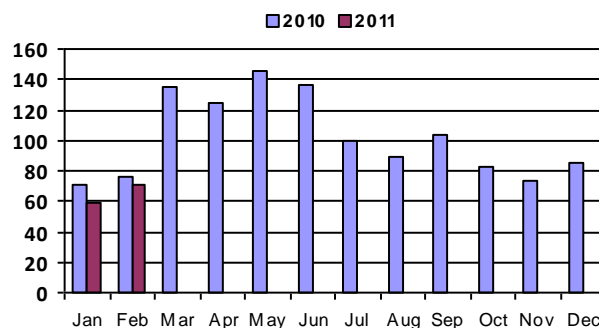
### Closed Residential

Category	Feb-10	Feb-11	% Change
#Of Closed Sales - Month	153	175	14.4%
#Of Closed Sales - YTD	292	328	12.3%
Avg. Days On Market	67	118	76.1%
# Of Active Listings	861	948	10.1%
# Of NEW Listings	521	305	-41.5%
Absorption Rate (in months)	4.9	5.8	16.9%
Average Price (Sold)	192,196	176,888	-8.0%



### Closed Condo

Category	Feb-10	Feb-11	% Change
#Of Closed Sales - Month	76	71	-6.6%
#Of Closed Sales - YTD	147	130	-11.6%
Avg. Days On Market	163	108	-33.7%
# Of Active Listings	481	435	-9.6%
# Of NEW Listings	241	115	-52.3%
Absorption Rate (in months)	5.9	7.1	20.7%
Average Price (Sold)	100,326	86,496	-13.8%



# Land Title Guarantee Company

<http://www.ltgc.com>

Based on information from Metrolist, Inc. for the period Jan 2009 through present. Note: This representation is based in whole or in part on data supplied by Metrolist, Inc. Metrolist, Inc. does not guarantee nor is in any way responsible for its accuracy. Data maintained by metrolist, Inc. may not reflect all real estate activity in the market.

# February 2010 - Real Estate Market Statistics

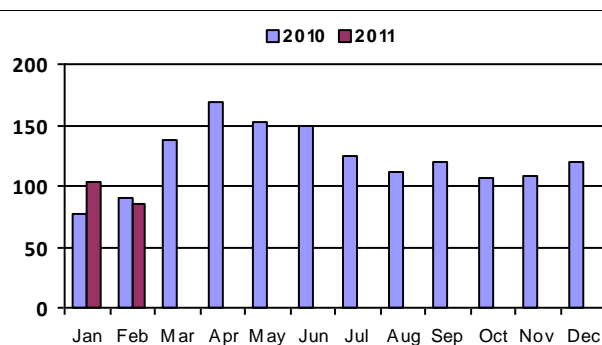


## Douglas Highlands Ranch Lone Tree - DHL

Includes - Highlands Ranch, Lone Tree

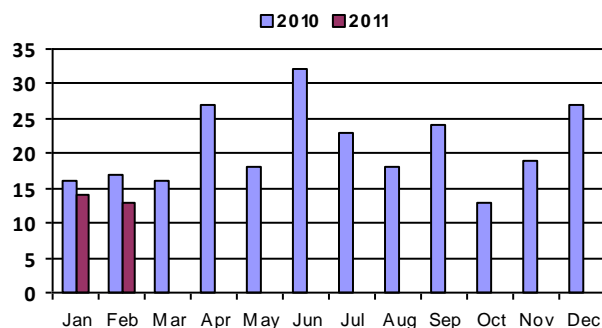
### Closed Residential

Category	Feb-10	Feb-11	% Change
#Of Closed Sales - Month	90	86	-4.4%
#Of Closed Sales - YTD	167	189	13.2%
Avg. Days On Market	97	112	15.5%
# Of Active Listings	614	529	-13.8%
# Of NEW Listings	351	184	-47.6%
Absorption Rate (in months)	6.1	6.3	2.7%
Average Price (Sold)	334,635	324,037	-3.2%



### Closed Condo

Category	Feb-10	Feb-11	% Change
#Of Closed Sales - Month	17	13	-23.5%
#Of Closed Sales - YTD	33	27	-18.2%
Avg. Days On Market	78	171	119.2%
# Of Active Listings	143	103	-28.0%
# Of NEW Listings	80	28	-65.0%
Absorption Rate (in months)	7.1	8.	13.3%
Average Price (Sold)	222,006	226,777	2.1%



# Land Title Guarantee Company

<http://www.ltgc.com>

Based on information from MetroList, Inc. for the period Jan 2009 through present. Note: This representation is based in whole or in part on data supplied by MetroList, Inc. MetroList, Inc. does not guarantee nor is in any way responsible for its accuracy. Data maintained by MetroList, Inc. may not reflect all real estate activity in the market.

# February 2010 - Real Estate Market Statistics

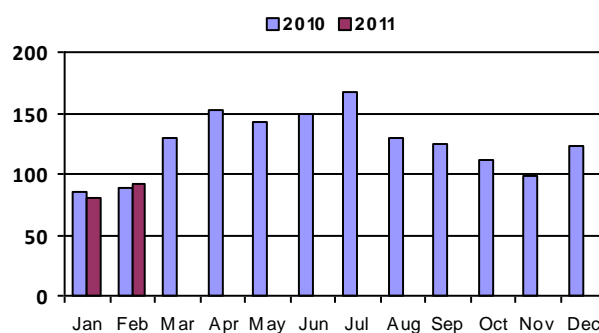


## Douglas County West - DCW

Includes - Castle Rock, Larkspur, Sedalia, Palmer Lake, part of Littleton

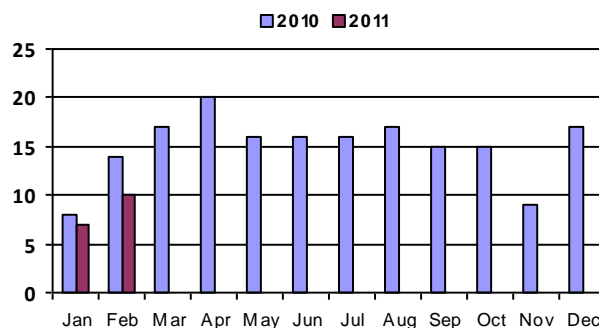
### Closed Residential

Category	Feb-10	Feb-11	% Change
#Of Closed Sales - Month	89	92	3.4%
#Of Closed Sales - YTD	175	172	-1.7%
Avg. Days On Market	123	151	22.8%
# Of Active Listings	1,073	933	-13.0%
# Of NEW Listings	370	196	-47.0%
Absorption Rate (in months)	11.6	10.	-13.4%
Average Price (Sold)	395,800	364,146	-8.0%



### Closed Condo

Category	Feb-10	Feb-11	% Change
#Of Closed Sales - Month	14	10	-28.6%
#Of Closed Sales - YTD	22	17	-22.7%
Avg. Days On Market	129	139	7.8%
# Of Active Listings	106	78	-26.4%
# Of NEW Listings	44	18	-59.1%
Absorption Rate (in months)	7.4	8.1	9.0%
Average Price (Sold)	146,435	198,000	35.2%



# Land Title Guarantee Company

<http://www.ltgc.com>

Based on information from Metrolist, Inc. for the period Jan 2009 through present. Note: This representation is based in whole or in part on data supplied by Metrolist, Inc. Metrolist, Inc. does not guarantee nor is in any way responsible for its accuracy. Data maintained by metrolist, Inc. may not reflect all real estate activity in the market.

# February 2010 - Real Estate Market Statistics

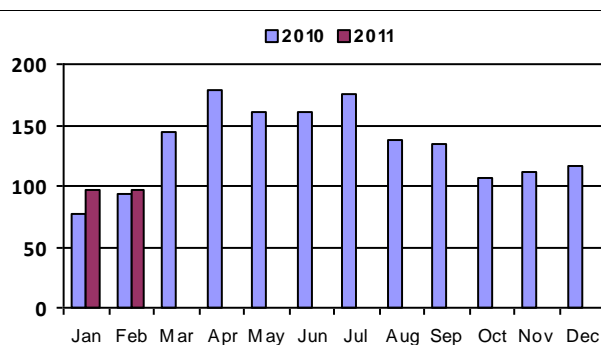


## Douglas Elbert Parker - DEP

Includes - Parker, Elizabeth, Franktown, Kiowa, Elbert, Deer Trail, Simla

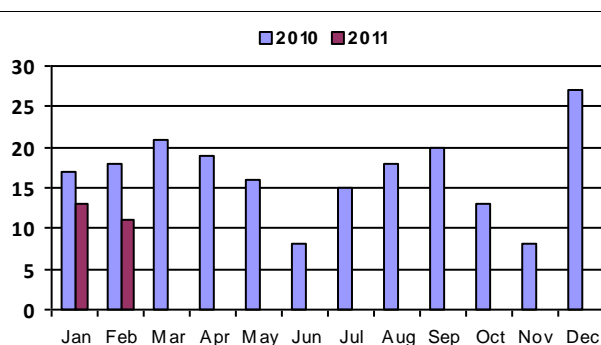
### Closed Residential

Category	Feb-10	Feb-11	% Change
#Of Closed Sales - Month	94	97	3.2%
#Of Closed Sales - YTD	171	194	13.5%
Avg. Days On Market	118	154	30.5%
# Of Active Listings	979	920	-6.0%
# Of NEW Listings	394	232	-41.1%
Absorption Rate (in months)	9.6	9.4	-1.8%
Average Price (Sold)	347,126	328,268	-5.4%



### Closed Condo

Category	Feb-10	Feb-11	% Change
#Of Closed Sales - Month	18	11	-38.9%
#Of Closed Sales - YTD	35	24	-31.4%
Avg. Days On Market	55	144	161.8%
# Of Active Listings	101	83	-17.8%
# Of NEW Listings	37	21	-43.2%
Absorption Rate (in months)	5.6	7.9	41.0%
Average Price (Sold)	133,880	156,428	16.8%



# Land Title Guarantee Company

<http://www.ltgc.com>

Based on information from MetroList, Inc. for the period Jan 2009 through present. Note: This representation is based in whole or in part on data supplied by MetroList, Inc. MetroList, Inc. does not guarantee nor is in any way responsible for its accuracy. Data maintained by MetroList, Inc. may not reflect all real estate activity in the market.